

0 Pts

1999 CQ WW Contest N6TR

Mem = 154248

06:43:57

160

80

40

20

15

10

All

QSOs

DX Mults

Zone

0

0

0

0

0

0

0

4J 4L

CU DL

G GD G

KH2 KH

OZ P4

UN UR

CE C

EX

I I

OE OH

UA U

ZF

160CW

Rig

EN

F1/2-C

MC

MS-D

07:06

QSOs

DX Mults

Zone

0

0

0

0

0

0

0

4J 4L 4X 6Y 8P 9A 9T 9M6 9V B

CU DL DU EA EA6 EA8

G GD G1 GJ GM GW HA B

KH2 KH6 KL KP2 KP4 LA LU

OZ P4 PA PJ2 PJ7

UN UR UE UK UH X

CE C6 CE M

EY E2

LY LZ OA OE OH OK OM ON

PA PJ2 PJ7

UE UK UH X

07:06

QSO needs for G4AMJ

160 80 40 20 15 10

0

0

0

0

0

0

0

07:06

QSOs

DX Mults

Zone

0

0

0

0

0

0

0

4J 4L 4X 6Y 8P 9A 9T 9M6 9V B

CU DL DU EA EA6 EA8

G GD G1 GJ GM GW HA B

KH2 KH6 KL KP2 KP4 LA LU

OZ P4 PA PJ2 PJ7

UN UR UE UK UH X

CE C6 CE M

EY E2

LY LZ OA OE OH OK OM ON

PA PJ2 PJ7

UE UK UH X

07:06

QSO needs for G4AMJ

160 80 40 20 15 10

0

0

0

0

0

0

0

07:06

QSOs

DX Mults

Zone

0

0

0

0

0

0

0

4J 4L 4X 6Y 8P 9A 9T 9M6 9V B

CU DL DU EA EA6 EA8

G GD G1 GJ GM GW HA B

KH2 KH6 KL KP2 KP4 LA LU

OZ P4 PA PJ2 PJ7

UN UR UE UK UH X

CE C6 CE M

EY E2

LY LZ OA OE OH OK OM ON

PA PJ2 PJ7

UE UK UH X

07:06

QSO needs for G4AMJ

160 80 40 20 15 10

0

0

0

0

0

0

0

07:06

QSOs

DX Mults

Zone

0

0

0

0

0

0

0

4J 4L 4X 6Y 8P 9A 9T 9M6 9V B

CU DL DU EA EA6 EA8

G GD G1 GJ GM GW HA B

KH2 KH6 KL KP2 KP4 LA LU

OZ P4 PA PJ2 PJ7

UN UR UE UK UH X

CE C6 CE M

EY E2

LY LZ OA OE OH OK OM ON

PA PJ2 PJ7

UE UK UH X

07:06

QSO needs for G4AMJ

160 80 40 20 15 10

0

0

0

0

0

0

0

07:06

QSOs

DX Mults

Zone

0

0

0

0

0

0

0

4J 4L 4X 6Y 8P 9A 9T 9M6 9V B

CU DL DU EA EA6 EA8

G GD G1 GJ GM GW HA B

KH2 KH6 KL KP2 KP4 LA LU

OZ P4 PA PJ2 PJ7

UN UR UE UK UH X

CE C6 CE M

EY E2

LY LZ OA OE OH OK OM ON

PA PJ2 PJ7

UE UK UH X

07:06

QSO needs for G4AMJ

160 80 40 20 15 10

0

0

0

0

0

0

0

07:06

QSOs

DX Mults

Zone

0

0

0

0

0

0

0

4J 4L 4X 6Y 8P 9A 9T 9M6 9V B

CU DL DU EA EA6 EA8

G GD G1 GJ GM GW HA B

KH2 KH6 KL KP2 KP4 LA LU

OZ P4 PA PJ2 PJ7

UN UR UE UK UH X

CE C6 CE M

EY E2

LY LZ OA OE OH OK OM ON

PA PJ2 PJ7

UE UK UH X

07:06

QSO needs for G4AMJ

160 80 40 20 15 10

0

0

0

0

0

0

0

07:06

QSOs

DX Mults

Zone

0

0

0

0

0

0

0

4J 4L 4X 6Y 8P 9A 9T 9M6 9V B

CU DL DU EA EA6 EA8

G GD G1 GJ GM GW HA B

KH2 KH6 KL KP2 KP4 LA LU

OZ P4 PA PJ2 PJ7

UN UR UE UK UH X

CE C6 CE M

EY E2

LY LZ OA OE OH OK OM ON

PA PJ2 PJ7

UE UK UH X

07:06

QSO needs for G4AMJ

160 80 40 20 15 10

0

0

0

0

0

0

0

07:06

QSOs

DX Mults

Zone

0

0

0

0

0

0

0

4J 4L 4X 6Y 8P 9A 9T 9M6 9V B

CU DL DU EA EA6 EA8

G GD G1 GJ GM GW HA B

KH2 KH6 KL KP2 KP4 LA LU

OZ P4 PA PJ2 PJ7

UN UR UE UK UH X

CE C6 CE M

EY E2

LY LZ OA OE OH OK OM ON

PA PJ2 PJ7

UE UK UH X

07:06

QSO needs for G4AMJ

160 80 40 20 15 10

0

0

0

0

0

0

0

07:06

QSOs

DX Mults

Zone

0

0

0

0

0

0

0

4J 4L 4X 6Y 8P 9A 9T 9M6 9V B

CU DL DU EA EA6 EA8

G GD G1 GJ GM GW HA B

KH2 KH6 KL KP2 KP4 LA LU

OZ P4 PA PJ2 PJ7

UN UR UE UK UH X

CE C6 CE M

EY E2

LY LZ OA OE OH OK OM ON

PA PJ2 PJ7

UE UK UH X

07:06

QSO needs for G4AMJ

160 80 40 20 15 10

0

0

0

0

0

0

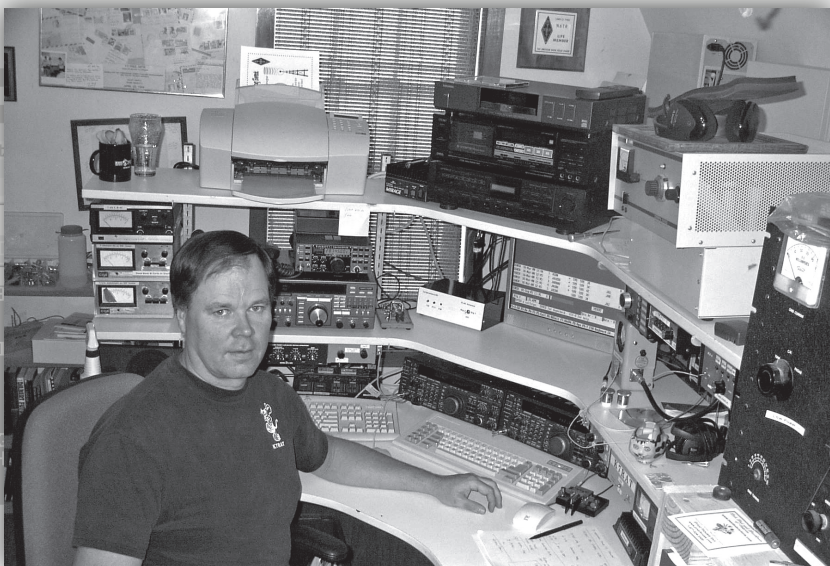
0

07:06

QSOs

DX Mults

Zone



**Crowne Plaza Hotel  
Presidential Ballroom (2nd Floor)  
33 East Fifth Street  
Dayton, Ohio · USA**

160CW 12-Apr-99 13:32 1 G4AMJ 599 599 14 G 14 3  
 160CW 12-Apr-99 13:43 2 **Crowne Plaza Hotel**  
**Presidential Ballroom (2nd Floor)** INSERT  
 Rig 1 35 WPM This hr = 0 Rate = 0  
 You are in the Search And Point mode. Press Shift-Iab to exit.  
**33 East Fifth Street**  
**Dayton, Ohio • USA**  
 F1-DE Call F2-RST# F3-RST F4-Zone Alt-AskForHis F5-Cl+Ex AltF10-CfmC1

# DX<sup>®</sup> ENGINEERING<sup>®</sup>

DX Engineering can supply you with what you need to stay competitive, including advice from serious Amateur Operators, access to great gear and the fastest shipping in the industry.

## **Custom Cable Builder**

- Live now at [DXEngineering.com](http://DXEngineering.com)
- Select the cable, length and connectors you want
- Each assembly is rigorously tested before it leaves DX Engineering's facility
- Use it to build custom ground braid assemblies too



## **Beverage Antenna Systems**

- MF/HF coverage
- Excellent signal to noise ratio for improved weak signal reception
- Combine multiple systems for 4-direction receive capability
- Reversible systems also available



## **Active Magnetic Loop MF/HF Receiving Antenna**

- Manufactured and sold exclusively by DX Engineering
- Excellent broadband reception from 100 kHz to 30 MHz
- Up to 30 dB of electrostatic field noise rejection
- Only 38" diameter—easy installation



## **Hi-Z Antenna Products**

- HF Receiving Array Systems, Preamps, Filters and Transformers
- Available exclusively at DX Engineering
- Work well in high-RF fields
- Compact arrays won't take up a lot of space



## **KD9SV 160/80 Meter Systems**

- Preamplifiers, antenna switches, Beverage systems and KD9SV's unique Front-End Saver
- Available exclusively at DX Engineering
- High-performance Top-Band gear



Get the right parts and blazing-fast shipping. Request your catalog and shop online 24 hours a day, 7 days a week at [DXEngineering.com](http://DXEngineering.com).

**Request your  
catalog and shop  
online 24 hours a day,  
7 days a week at  
[DXEngineering.com](http://DXEngineering.com)**

**Sales: 1-800-777-0703**

8:30 am to midnight, Monday-Friday  
8:30 am to 5 pm, Saturday & Sunday

**Tech: 1-330-572-3200**

8:30 am to 7 pm, Monday-Friday  
9:00 am to 2 pm, Saturday

**DXEngineering.com** Online 24/7  
All Times Eastern Country Code: +1

# DX<sup>®</sup> ENGINEERING<sup>®</sup>

# *27th Annual Top Band Dinner*

*Friday • May 20, 2016*

**6:15**

**Social Hour**

**7:00**

**Dinner**

## **Welcome**

*Tim Duffy, K3LR*

## **Program: Recent Advancements in the Treatment of Topband Disease**

*Larry "Tree" Tyree, N6TR*

***Tree, N6TR, was the first to publish a paper about Top-band Disease nearly 20 years ago. While no cure for the disease has been found since that time - there has been some progress made on keeping the symptoms under control so that the afflicted can lead mostly normal lives. Tree will also address the unresolved question, if working DX on 160 meters from the West Coast is indeed possible.***

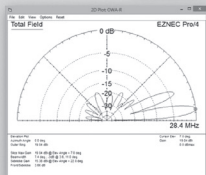
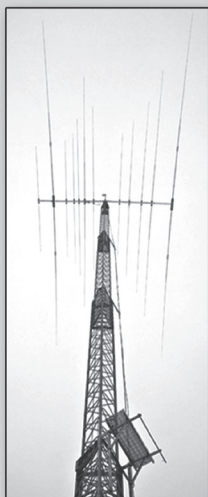
Tickets for the 2017 Top Band Dinner will be available  
after January 1, 2017 at <http://TopBandDinner.com>

Program compliments of Force 12 and DX Engineering



**FORCE 12™**  
**SUPERSTORE**

# NEW for 2016



- Massive, all-new **Magnum™** HF monoband designs from **G0KSC™**, the ultimate Big Guns
- **403A Genius System™**: **Antenna Genius™**, **Rotator Genius™**, and **Interface Genius™**
- Completely redesigned **Sigma™ & Ruby™** vertical dipoles (no radials) for 160m, 80m, 40m, 2m, 222-MHz, and multiband with stealth flagpole option
- Heavy duty **Qadro™** omnidirectional horizontal loops for 6m, 2m, and other bands
- New, improved versions of the famous **6BA**, **5BA**, and other classics
- **G0KSC™**-designed, military grade **LPDAs**
- Complete single- and dual-polarity **EME Moonbounce Systems** from **InnovAntennas**
- **Bodnar** GPS-locked frequency standards
- **Watson SDRX1 MK3 SDR** tiny but mighty software defined receiver 100-kHz to 2-GHz
- **AlfaSpid** rotators, **SSB Electronic & Beko** LNAs & PAs, **AN Wireless Towers**, and much more!

**4 3A**



**New Website**  
**[www.Force12super.com](http://www.Force12super.com)**

**New address**  
**784 Valley Court, Unit C3**  
**Grand Junction, Colorado 81505**

**Same phone (888) 998-8541**

**InnoAntennas.us**  
**Performance through Innovation**