

TopBand Multi-OpTeam W2GD

**Celebrating Nearly 40 Years of
160 Meter Group Contesting**

**2025 Dayton Top Band Dinner
John Crovelli, W2GD**

Tonight's Presentation:

- The story of a **FOUR DECADE** journey by driven and loyal 160M adventurers who share the excitement of Top Band contesting.
- Show and Tell about two fabulous 160M station locations in of all places New Jersey
- Follow the Team's evolution, exploits and camaraderie
- Some bragging about our Team's accomplishments

160M operators everywhere dream of having a station location with ...

Salt water for miles and miles



(The view toward EU at 240 feet in West Creek)

You quickly come to love *frozen* salt water too!
(Sandy Hook – 1999)



So What's the Big Deal about 160M and Multi-Op Contesting?

Extreme Team Competition

In Year's Past: WW2Y, W8JI, W1KM, WE3C

Now: K1LZ, K3LR, N2CEI, KC1XX, and N0NI

Engineering Challenge ... it takes LARGE ANTENNAS and to play this game successfully

Operations place a special premium on planning, setup and stamina **much like going on a DXpedition**

- ▣ **GROUP FUN** – we've been doing this together and sharing a special fellowship for nearly 40 years

CQ160 CW **EXTREME** Multiop Competition

Arguably the most competitive Category in **all** of contesting

			Diff	<u>Margin of Victory</u>
1998				
	W2GD	737,734	6K	FIVE TEN POINT QSOS (.9%)
	W1FJ (W1KM)	731,316		
1999				
	W2GD	572,112	5K	FIVE TEN POINT QSOS (.9%)
	W8JI	567,015		
2021				
	W2GD	839,014	>1K	ONE FIVE POINT QSO
	K3LR	838,530		(just .1% difference)
2024				
	N2AA	680,720	29K	FIFTEEN 10 POINTERS (2%)
	K1LZ	660,920		

A Little About Our Team

- ▣ Varied backgrounds and occupations
- ▣ Dedicated and Driven – its not easy to do this from a remote station location
- ▣ Egos are left at home
- ▣ Each of us has a “specialty”
- ▣ It’s definitely **NOT** all about operating skills...

“Divison of Labor”

- ❑ Leadership & Management – W2GD
- ❑ Planning & Logistics – W2GD, W2CG, N2OO
- ❑ Antenna/Station design & construction – K2TW, W1GD, W2GD, W2CG, W2NO, KE2D
- ❑ Electrical & electronic expertise – W2NO
- ❑ System/Network Communications – W2CG
- ❑ Troubleshooting/Problem-Solving - Everyone
- ❑ Operating– every member contributes, to the best of their skills and ability.

Critical Skills – Need a plumber? We HAVE ONE!



Timeline - 160 Meter Multi-op Team

- **1987 – 1995** W2GD Home QTH
65 miles from the NJ coastline
- **1995 – 2001** Sandy Hook, NJ USCG Base
On the coast – just 13 miles south of NYC
- **2001 to Present** West Creek, NJ @ WYRS-FM
Tidal salt marsh on Barnegat Bay,
20 miles north of Atlantic City

1987 to 1993 – W2GD's Home

- **Core Team: W2GD, K2TW, KU2C**
- **Modest 160M station in Western NJ – space limited – not competitive with WW2Y**
- **70' shunt-fed tower and just 2 Beverages**
- **BUT we somehow placed #1 WORLD in our first CQ160 CW Multi – *beginners luck?***

1995 to 2001 – USCG Rescue Station, Sandy Hook, NJ

Expanded CoreTeam:

Adding N2AA, K2SQ, W2CG, W2NO, W1GD, W2RQ

- **A sandy peninsula between ocean and bay
Just 12 miles south of Manhattan**
- **A Loran “A” location 1951 – 1980**
- **Winter FD-style Operations – erect antennas on
the day of contest**
- **Hundreds of sand dune acres for Beverages**

US Coast Guard Station



The Sandy Hook Lighthouse (built in 1764 – oldest in USA and still operating) **But Not Our QTH**



Sandy Hook Building One – The Base Commanders Living Quarters and Electronics Shop – Orig. Shack on Third Floor on Right next to 200' Tower



Sandy Hook – 30 Year Old 200 foot Tower



GD half way up the ladder, next stop install a pulley at 200 feet



View toward EU – 3,787 miles of Atlantic to London



View toward South America – miles of salt water bay



Looking East toward Africa – blue ocean all the way



View to the West – 8 more miles of saltwater



900 foot NE Beverage crossing the dunes



W2GD - Sandy Hook 1999

- **Work Parties**
Prior to each
contest to pre-
install TX and
RX antenna
supports

- **Note N2AA in
His Siberian
Head Gear**



W2GD - Sandy Hook 1999

- A larger room provided in 1999 after years in a much smaller space on the 3rd floor.
- But NO HEAT!
- IC781, IC765 (2)
Alpha 87A.
Alpha 91



W2GD - Sandy Hook 1999

- Rear view of the station - Three (3) Xcvrs, Two (2) Amplifiers, Three (3) computers, and a 2M packet station

- Maze of cabling for 2 TX and 7 RX antennas

- Huge Monitors!



W2GD - Sandy Hook 1999

- Tom, K2TW scans for multipliers on the “Mult” station
- John, W2GD and Gene, N2AA digging out 2nd and 3rd layer Europeans on the “Run” Station



W2GD - Sandy Hook 1999

- Gene, N2AA (SK) giving W2GD operating technique “coaching” at the run position
- K2TW busy finding more QSOs on the Mult. station



W2GD - Sandy Hook 1999

- The *Other* GD – Gerry, W1GD, starts the Saturday morning shift on the run radio

- K2TW keeps tuning between CQs at the mult position



W2GD - Sandy Hook 1999

- Marty, W2CG
manning the
Multiplier chair

- W2GD running

- Ed, K2SQ
handles the
'slave' receiver
at the run
position



W2GD - Sandy Hook 1999

□ The *Best Part* of spending the contest together with friends is telling and retelling “stories” all weekend long.

L-R K2TW (zzz),
W2RQ, W1GD,
W2GD, N2AA



THE 1999 V

W2NO

W2CG

W2GD

K2SQ

N2AA

K2TW

W2RQ

Missing:

W1GD

N2NC

N5RA



Since September 2001 – WYRS-FM, West Creek, NJ – FM29

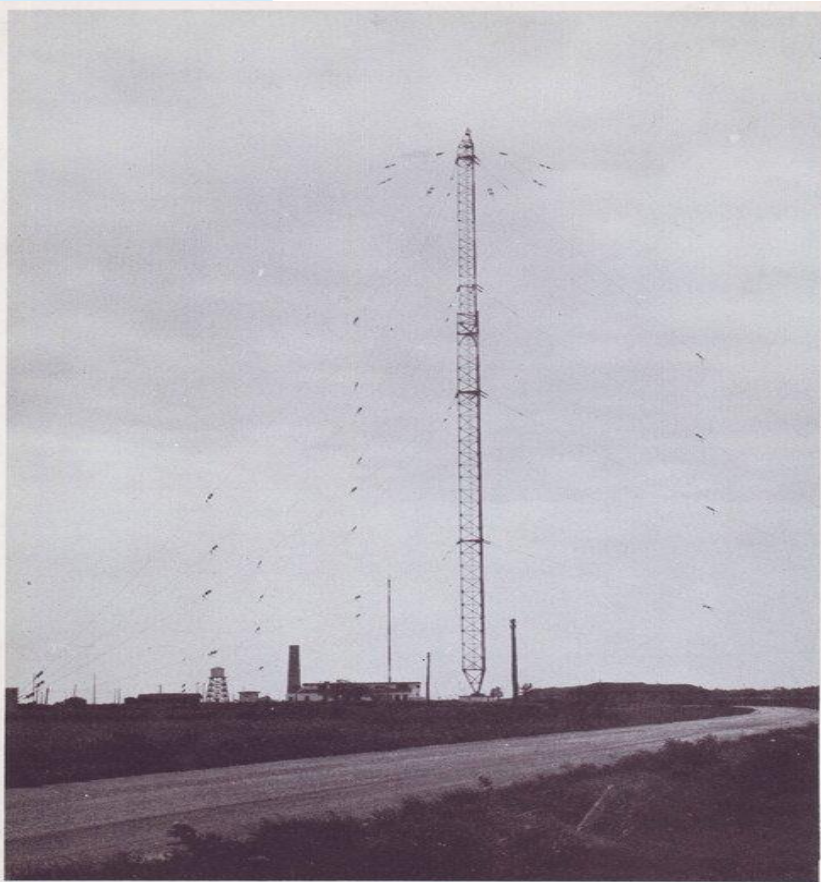
Core Team: K2TW, KU2C, W1GD W2CG, W2GD,
W2NO, W2RQ, N2OO, KE2D

- Access to Sandy Hook ended after 9/11 attack
- Former site of Marine Coast Station WSC
- 65 Miles South of Sandy Hook
- 20 Miles North of Atlantic City
- 30 acres of Tidal Salt Marsh on Barnegat Bay
300 foot guyed tower surrounded by salt marsh
- 50 acres of adjacent fresh water marsh
- US Park Service National Wildlife Refuge

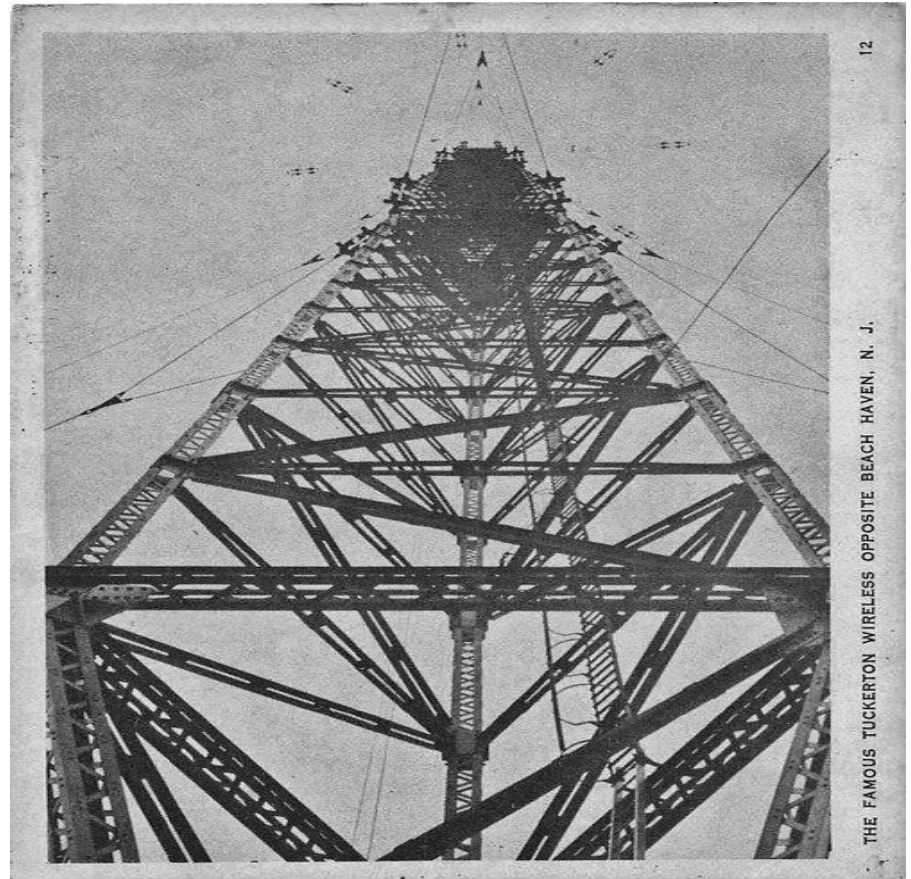
The Original WSC in Tuckerton, NJ

- ❑ **1912 – 1918 German Ownership – Mysterious History and Alleged Spying**
- ❑ **Operators interred during WWI**
- ❑ **Post WWI - Owned by RCA until 1948**
- ❑ **Two Alexanderson alternators 1921 – 1948**
- ❑ **680 foot steel tower dismantled in 1955**

Tallest Structure in SNJ at the time



Transworld Radio Tower, Tuckerton, N. J.

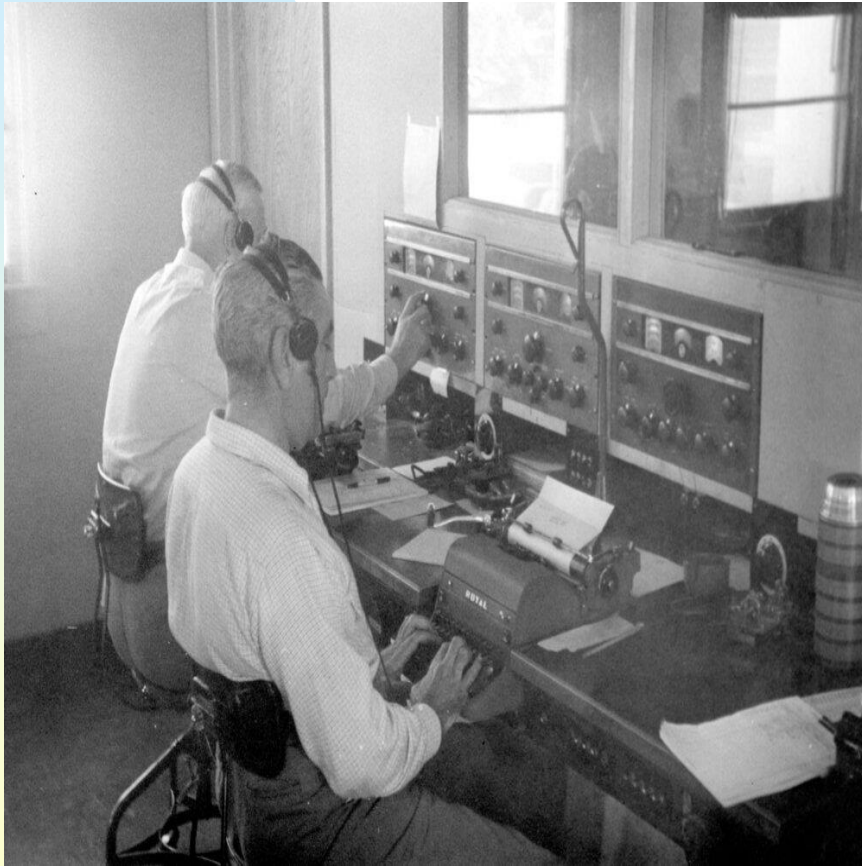


THE FAMOUS TUCKERTON WIRELESS OPPOSITE BEACH HAVEN, N. J.

WSC West Creek Location – Again run by RCA from 1948 till 1970



RCA - 50's and 60's State of the Art



WSC – Position One in 1956



Post RCA - WSC Position One about 1983



WSC – Single Band Henry Amps – Many KW



2001 - WSC - Future Home of WYRS-FM



A tower surrounded by tidal salt marsh...



300 Feet of Rohn 55G



Tower in the marsh...another view from the station building



600' runs of 7/8 inch Andrews Heliax out to tower base to feed the TX array





NE-2 near end

NE 60' Tower (TA33)

SE 60' Tower

60' Tower

NE Sloper

SW Sloper

WYRS Main Tower

Edwin B. F

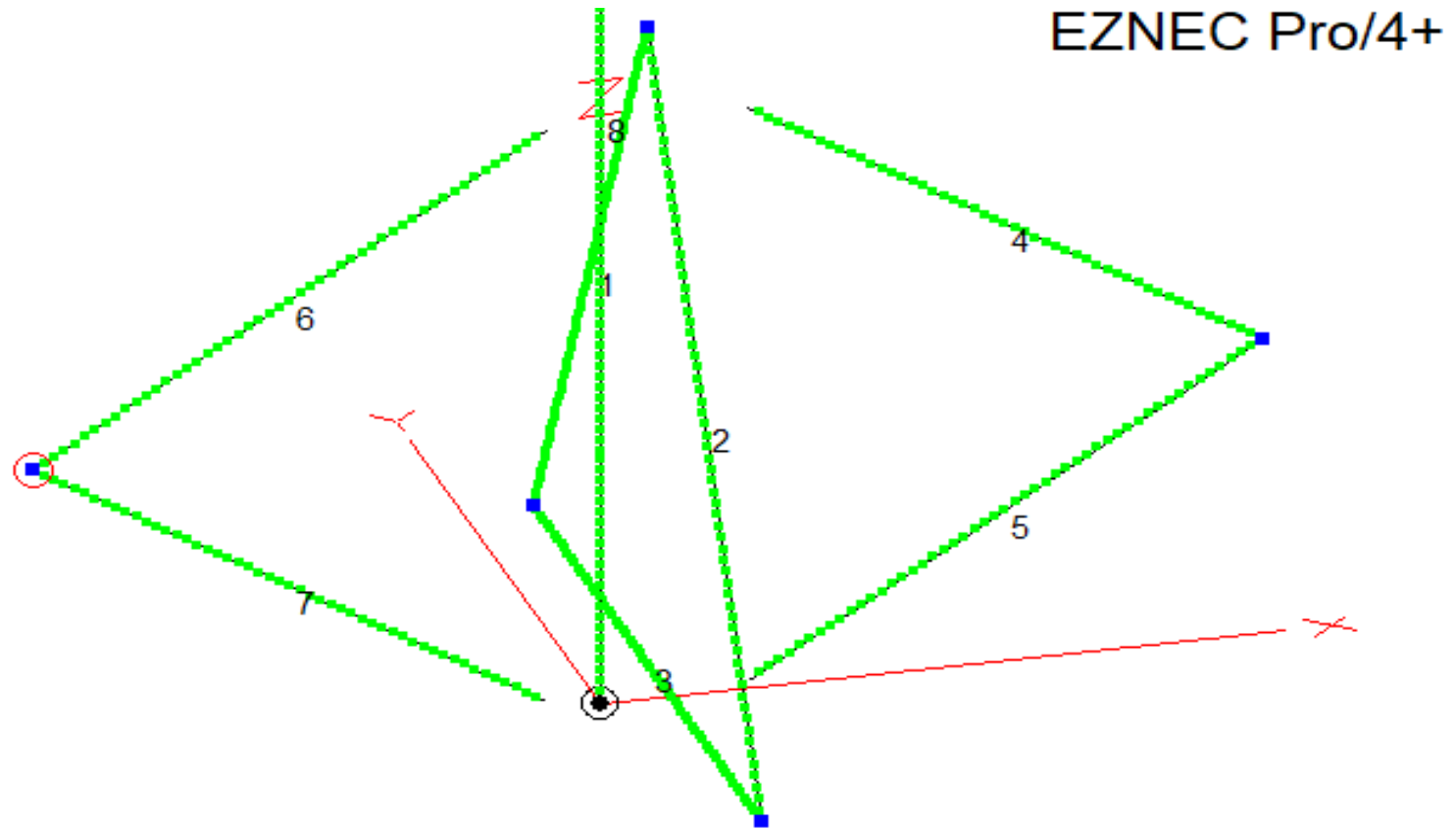
Imagery Date: 9/20/2010 1995 152 ft

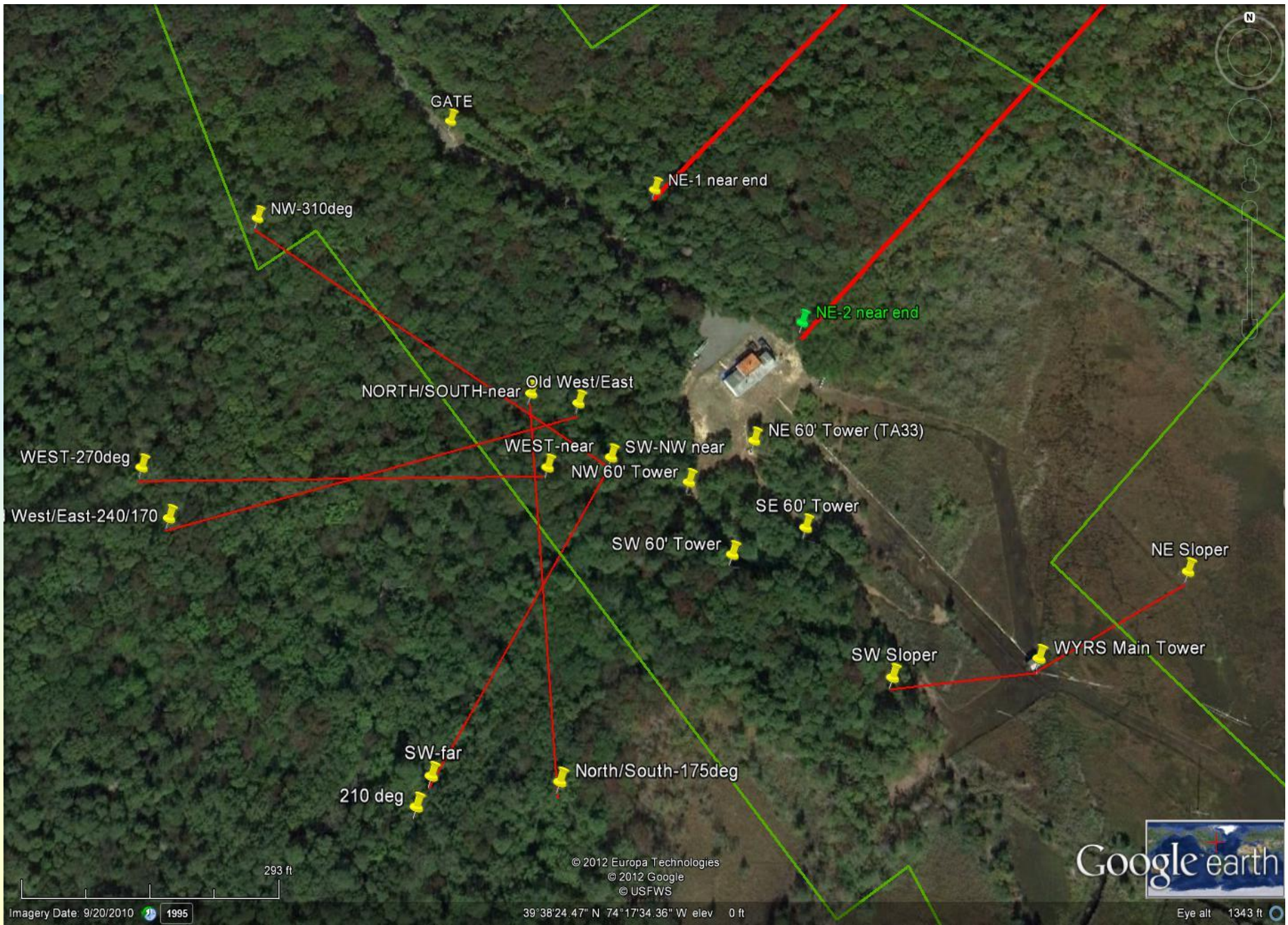
© 2012 Europa Technologies
© 2012 Google
© USFWS

39°38'23.34" N 74°17'28.52" W elev 0 ft

Google earth
Eye alt 700 ft

2 Ele. Vertical Beam NE and West





View to EU...do you feel **LOUD** yet?



View toward SA – tidal marsh and bay for 20 miles to Atlantic City just visible on the horizon



Looking inland toward the NNW is equally impressive



View North from the Tower – flat pinelands and freshwater marsh beyond the building



Tower in the marsh...on a cold January day



High Water



Another tower climber photo ... it's what I used to do





Replacement Guy Anchor Materials

Compilation for Dinnertime.mp4 - VLC media player

Media Playback Audio Video Subtitle Tools View Help



05:32

Tuesday 01:29:59 PM - April 29, 2025

20:41



Search



100%
1:29 PM
4/29/2025

Reguying – Screwed in 80 feet deep



2012 Hurricane Sandy – A Disastrous Direct Hit

WYRS 25TH FINAL 10 MINUTES MP4 92 MB.mp4 - VLC media player

Media Playback Audio Video Subtitle Tools View Help



06:55



Play
If the playlist is empty, open a medium

For Dayton Videos WYRS 30th WIN 11 (F:) Tuesday 01:35:16 PM - April 29, 2025 DJL_Mini_4... WYRS 25T...

105%

1:35 PM
4/29/2025

Tidal Surge Caused the Most Destruction

WYRS 25TH FINAL 10 MINUTES MP4 92 MB.mp4 - VLC media player
Media Playback Audio Video Subtitle Tools View Help



06:57



Search



For Dayton

Videos

WYRS 30th

WIN 11 (F)



Tuesday 01:35:51 PM - April 29, 2025

DJI_Mini_4...

WYRS 25T...

1:35 PM
4/29/2025

10:03

Bldg. crawl space flooded

WYRS 25TH FINAL 10 MINUTES MP4 92 MB.mp4 - VLC media player

Media Playback Audio Video Subtitle Tools View Help



06:52



10:03

Search

For Dayton Videos WYRS 30th WIN 11 (F:) Tuesday 01:35:04 PM - April 29, 2025 DJI_Mini_4... WYRS 25T...

1:35 PM 4/29/2025 105%

Saltwater Damage – a gift that keeps on giving



The price you pay to be near saltwater



Expert repair by W2NO



The Great Blizzard of 2022



22 Inches in 24 hours 40 Mph Winds



Dug out to go to Breakfast



Three Positions can Access to All Antennas



Station Configuration: Three K3s, OM2000 – 1.2 KW

W2RQ “Mult” W2NO “Run” W1GD “Slave”



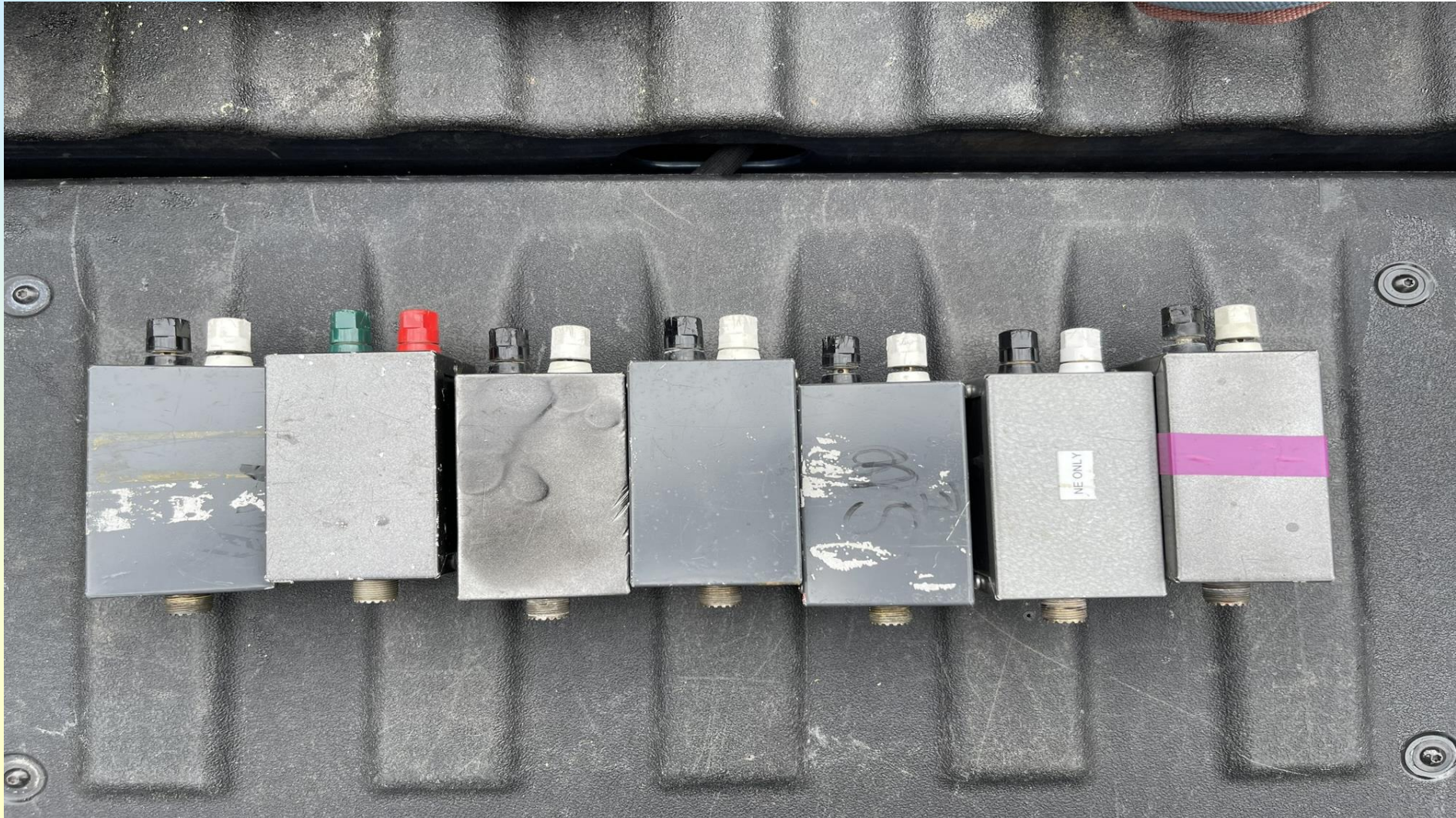
End of N/S Bev. This isn't K3LR



Typical Beverage Connection



Seven 9:1 Transformers for Six Beverages



K2TW K9CT W2GD with N200 in the background



K4ZA W2RQ N2NT with W2GD standing



L to R: WW2Y W2RQ K3CT (N200 looking on)



W1GD W2NO W2RQ K9CT and 'Sleepy GD' in the background



W2GD mult K9CT run K2TW slave



L to R K8NZ W2NO K2TW W2RQ W2GD



The Post Contest Breakfast Debrief

L to R: W2NO KU2C W2GD W2CG KE2D W2RQ WW2Y



Team Members since 1987 – over 50 operators

**K2TW KU2C W2GD N2AA(SK) W1GD W2CG W2NO
N2OO KE2D**

K2SQ WA2MKM N2HM W9NGA (SK) KB2JAQ

N3RD WW2Y N2NT N2NC N2NU K2SG

W3CF N5RA KD2RE KS3F N4HY

N2EA N2BA NO2R K2XT WA2VUY

K2GN K2RET W2ARP W2KP W2OB (SK)

K2PS W2REH NA2U N2WKS K3CT KC2GOW

KZ2I KI4KWR N2OZ W2USF WM2Q

Out of Area Guest Operators:

K4ZA K8NZ (2X) K9CT N4GN W1KM W5ZN

Technical Assistance and Support:

**W3LPL, W8JI, N6BV, W1FV (SK), N6TV, W3PP (SK),
N6RK, K6SE (SK), K3LR, K9RS, NO2R, N6BT, N3RD
and many others - THANKS**

Over 108,000 QSOs in 180 Countries

	W2GD Home	Sandy Hook	West Creek	Totals
CQ160 CW W2GD and N2AA	6,142	9,261	35,226	50,629
CQ160 PH		4,348 W2GD	5,139 N2CW N2AA	9,487
Stew Perry TBDC			14,587	14,587
ARRL 160			34,016	34,016
Grand Totals	6,142	13,609	88,968	108,719

And Our Efforts have been Consistent

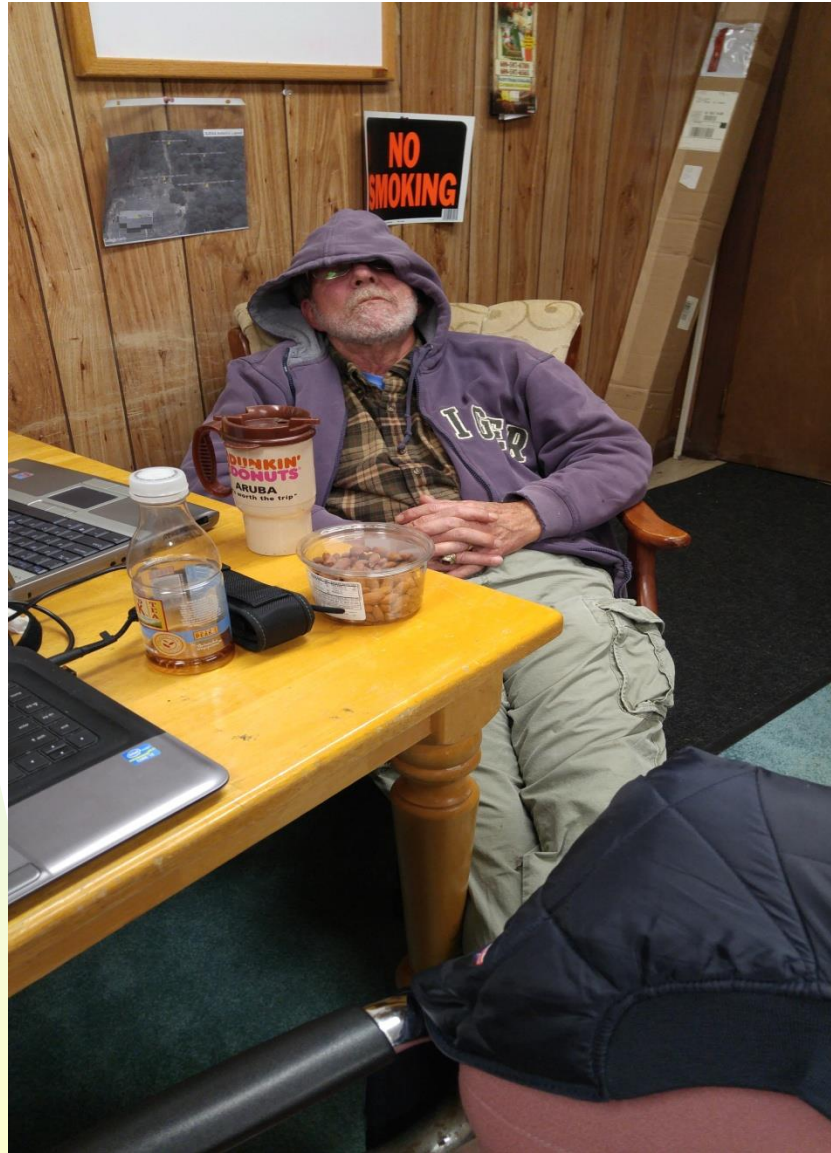
	ARRL 160	TBDC	CQ160 CW	CQ160 PH
No. of Entries	23	24	38	4
First Place <i>World</i>	-	12	1	3
First Place <i>USA</i>	11	5	15	-
2nd Place USA	5	2	15	-
3 rd Place USA	6	3	3	-

















Hope you didn't end up feeling like this
“Sleepy GD” character tonight.....

Thanks for listening and 73!

